

Solid State Flashers



FS100 Series

- Low Cost, Small Size
- 24 or 120 V AC are Available
- Fixed at 75 Flashes per Minute (FPM)
- Custom Flash Rate 45 ... 150 FPM
- 1 or 2 Amps Steady - 10 A Inrush
- Totally Solid State and Encapsulated



FSU1000 Series

- Universal Input Voltage 24 ... 240 V AC
- Knob Adjustable Flash Rate 10...100 FPM
- Output Rated 1, 6, 10, or 20 A Steady
- Totally Solid State and Encapsulated



FS300 Series

- 12, 24 V DC
- Fixed at 75 Flashes per Minute (FPM)
- Custom Flash Rate: 60 ... 150 FPM
- 0.25 ... 3 A Steady
- Totally Solid State and Encapsulated

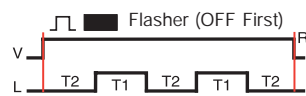
FS100 Series

The FS100 Series may be used to control inductive, incandescent or resistive loads. This series offers a 1 A (fullwave) or a 2 A (halfwave) steady state, 10 A inrush solid state output; and may be ordered with an input voltage of 24 or 120 V AC. Factory fixed flash rate of 75 flashes per minute or may be ordered with a fixed custom flash rate ranging from 45 to 150 flashes per minute.

Operation

Upon application of input voltage, the T2 OFF time begins. At the end of the OFF time, the T1 ON time begins and the load energizes. At the end of T1, T2 begins and the load de-energizes. This cycle repeats until input voltage is removed.

Reset: Removing input voltage resets the flasher.



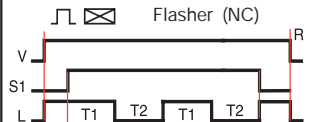
FSU1000 Series

The FSU1000 incorporates an onboard adjustable flash rate of 10 to 100 flashes per minute and a universal input voltage in one device. Its circuitry is capable of controlling loads of up to 20 A steady state. Ideal for applications where various flash rates and operating voltages are required.

Operation

When input voltage is applied to terminal 2 and the load (lamp), the load energizes steadily. When input voltage is applied to terminal 3, the output flashes.

Optional Low Current Switch (SW1): This low current switch could be a limit switch or contact. While open, the operator sees the load (lamp) ON and operating. When the limit switch closes, the load (lamp) flashes to attract attention.



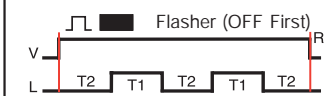
FS300 Series

The FS300 Series were specifically designed to operate lamp loads. Their two-terminal series connection and high immunity to line noise and transients make the FS300 Series ideal for moving vehicle operations. Factory fixed flash rate of 75 flashes per minute or may be ordered with a fixed custom flash rate ranging from 60 to 150 flashes per minute.

Operation

Upon application of input voltage, the T2 OFF time begins. At the end of the OFF time, the T1 ON time begins and the load energizes. At the end of T1, T2 begins and the load de-energizes. This cycle repeats until input voltage is removed.

Reset: Removing input voltage resets the flasher.

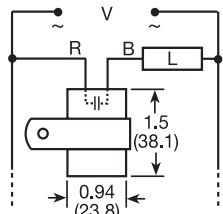


Part Numbers

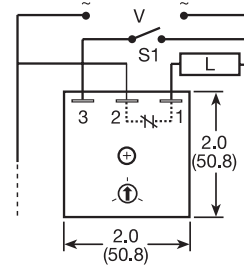
Input Voltage	Output Rating	Load Type	Part Number	Inrush Rating	Output Rating	Part Number	Input Voltage	Load Current	Part Number
120 VAC	1A	A	FS126	10 A	1A	FSU1000	12 VDC	2.5A	FS312
120 VAC	1A	B	FS126RC	60 A	6A*	FSU1003	24 VDC	1.5A	FS324
120 VAC	2A	A	FS127	100 A	10A*	FSU1004			
24 VAC	1A	A	FS146	200 A	20A*	FSU1005			
24 VAC	1A	B	FS146RC						

*A=Incandescent & Resistive B=Incandescent, Resistive & Inductive Other Voltages and options are available.

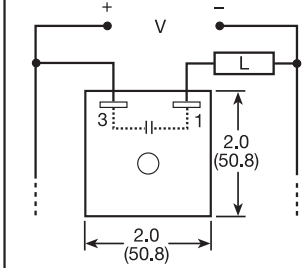
Connection Diagrams



R = Red Wire B = Black Wire



V = Voltage L = Load S1 = Initiate Switch



Inches (Millimeters)

Specifications

Input Voltage	24, 120 V AC, 50 ... 60 Hz	24 ... 240 V AC, 50 ... 60 Hz	12, 24 V DC
Tolerance	+/-15%	Guaranteed Range	12...36VDC +/-20%
Flash Rate	Fixed 75 FPM, +/-20%	Adjustable 10 ... 100 FPM	Fixed 75 FPM, +/-10%
Custom Flash Rates	From 45 ... 150 FPM		From 60 ... 150 FPM
Load Type	Incandescent, resistive or inductive	Incandescent, resistive or inductive	Incandescent or resistive
Surface Mounting	One #8 (M4 x 0.7) Screw	One #10 (M5 x 0.8) Screw	One #10 (M5 x 0.8) Screw
Termination	6 in. (15.2 cm) AWG 20 (.597 mm ²) wires	0.25 in. (6.35 mm) male quick connect	0.25 in. (6.35 mm) male quick connect
Operating Temperature	-20°C ... +60°C	-20°C ... +60°C (230 V AC +50°C)	-20°C ... +60°C
Storage Temperature	-40°C ... +85°C	-40°C ... +85°C	-40°C ... +85°C
Weight	≅ 1.1 oz (31g)	1A: ≅ 2.4 oz (68g), 6A+: ≅ 3.9 oz(111g)	≅ 2.2 oz (62.3g)
Package Height Dimension		1A units: 1.21 in. (30.7mm) 6A, 10A, 20A units: 1.51 in. (38.4mm)	1.21 in. (30.7mm)

Accessories

Quick connect to screw adaptor
P/N: P1015-18



Female quick connect P/N's
P1015-13 (AWG 10/12)
P1015-64 (AWG 14/16)
P1015-14 (AWG 18/22)



*Units rated ≥ 6 A must be bolted to a metal surface using the included heat sink compound. The maximum mounting surface temperature is 90°C.

See accessory pages for specifications.