

Delay On Break (Release)

EISB ISO-Timer

Timing Module

Discontinued Product



10 YEAR WARRANTY

5

- Optical Isolation Between Input and Output
- Wide Selection of Input and Output Voltage Ranges
- 1 A Solid State Output
- Fixed or Adjustable Delays From 0.2 s ... 1000 m in 6 ranges
- 0.5% Repeat Accuracy

Accessories



External adjust potentiometer
P/Ns:
P1004-13 (fig A)
P1004-13-X (fig B)



Female quick connect
P/N:
P1015-64 (AWG 14/16)



Quick connect to screw adaptor
P/N: **P1015-18**



Versa-knob
P/N: **P0700-7**



Plug-on adjustment module
P/N: **VTP(X)(X)**



See accessory pages for specifications.

Description

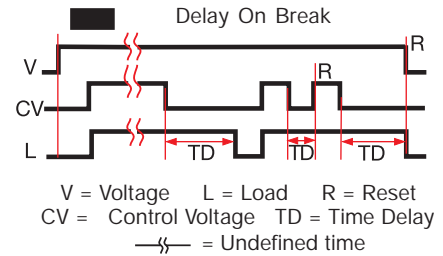
Optical isolation, combined with solid state timing, gives the ISO-Timers a distinct advantage in many applications. Digital circuitry provides long or short delays with accuracy and stability over a wide voltage and temperature range. Electrical isolation means the EISB can be initiated from a separate voltage source. Because of the design of the initiate circuit, the operation of a separate load can be used to initiate the EISB.

Operation

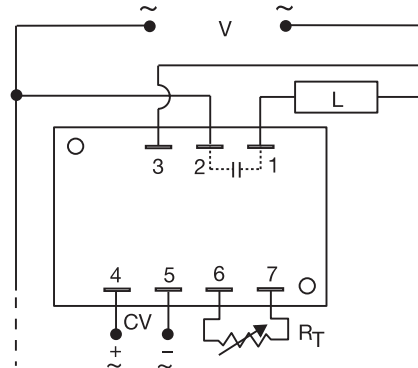
Input voltage must be applied prior to and during timing. The output is de-energized. Upon application of control voltage, the output energizes. The time delay begins when control voltage is removed. The output remains energized during timing. At the end of the time delay, the output is de-energized.

Reset: If the control voltage is re-applied during timing, the time delay is reset to zero. Reset also occurs when the input voltage is removed.

Function



Connection



R_T is used when external adjustment is ordered.

CV = Control Voltage

Time Delay	VTP P/N
0 - 0.2 ... 10 s	VTP5C
1 - 1 ... 100 s	VTP5G
2 - 10 ... 1000 s	VTP5K
3 - 0.1 ... 10 m	VTP5N
4 - 1 ... 100 m	VTP5P
5 - 10 ... 1000 m	VTP5R

Ordering Table

EISB Series	X Input	X Control Voltage	X Adjustment	X Time Delay *
	2 - 24 V AC	D - 19 ... 144 V AC	1 - Fixed	0 - 0.2 ... 10 s
	4 - 120 V AC	E - 88 ... 288 V AC	2 - External Adjust	1 - 1 ... 100 s
	6 - 230 V AC	F - 6 ... 18 V DC		2 - 10 ... 1000 s
				3 - 0.1 ... 10 m
				4 - 1 ... 100 m
				5 - 10 ... 1000 m

Example P/N: **EISB4D22** Fixed: **EISB4D1100S**

* If Fixed Delay is selected, insert delay [0.2 ... 1000] followed by (S) sec. or [0.1 ... 1000] (M) min.

Delay On Break (Release)

EISB ISO-Timer

Timing Module

Technical Data

Time Delay Type Range Repeat Accuracy Time Delay vs. Temperature & Voltage Tolerance (Factory Calibration) Reset Time Initiate Time	Digital integrated circuitry 0.2 s ... 1000 m in 6 adjustable ranges or fixed +/-0.5% +/-2% Range 0: +/-2% or 50 ms, whichever is greater Range 1-5: +/-1% or 50 ms, whichever is greater AC control voltages: ≤ 300 ms DC control voltages: ≤ 5 ms AC control voltages: ≤ 30 ms DC control voltages: ≤ 2 ms
Input Voltage Tolerance Line Frequency Control Voltage	24, 120, or 230 V AC +/- 20% 50 ... 60 Hz 6 ... 288 V in 3 ranges
Output Type Form Rating Voltage Drop	Solid state Normally Open, closed before and during timing 1 A steady state, 10 A inrush at 60°C AC - ≅ 2.5 V at 1 A
Protection Circuitry Dielectric Breakdown Insulation Resistance	Encapsulated ≥ 2000 V RMS terminals to mounting surface ≥ 100 MΩ
Mechanical Mounting Termination	Surface mount with two #6 (M3.5x0.6) screws 0.25 in. (6.35 mm) male quick connect terminals
Environmental Operating Temperature Storage Temperature Humidity Weight	-40°C ... +75°C -40°C ... +85°C 95% relative, non-condensing ≅ 4.8 oz (136 g)

5

R _T Selection Chart						
Desired Time Delay*						R _T
Seconds			Minutes			
0	1	2	3	4	5	Megohm
0.2	1	10	0.1	1	10	0.0
1	10	100	1	10	100	0.5
2	20	200	2	20	200	1.0
3	30	300	3	30	300	1.5
4	40	400	4	40	400	2.0
5	50	500	5	50	500	2.5
6	60	600	6	60	600	3.0
7	70	700	7	70	700	3.5
8	80	800	8	80	800	4.0
9	90	900	9	90	900	4.5
10	100	1000	10	100	1000	5.0

* When selecting an external R_T add at least 11% for tolerance of unit and the R_T.

