

Flasher - LED Lamps

FS400 Series

Solid State Flasher

Flashers



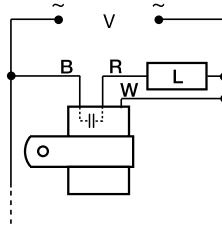
- Low Leakage for LED Lamps
- Fixed Flash Rate at 75 Flashes Per Minute
- Custom Flash Rate 45 ... 150 F.P.M.
- 0.5 or 1 A Solid State Output
- 24 V to 240 V AC in 2 Ranges
- Small Size: 1.5 x 0.94 in. (38 x 23.9 mm)

Approvals:

Description

The FS400 Series is a low leakage AC flasher designed to control LED, or resistive loads. This series offers a solid state output and may be ordered with an input voltage of 24 V to 240 V AC, in two ranges. It offers a factory fixed flash rate of 75 flashes per minute or may be ordered with a fixed custom flash rate ranging from 45 to 150 flashes per minute. The FS400 is the perfect solution for LED lamp flashing.

Connection



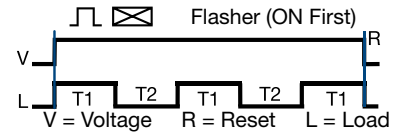
V = Voltage L = Load
R = Red Wire B = Black Wire
W = White Wire

Operation

Upon application of input voltage, the output energizes and the ON time begins. At the end of the ON time, the output de-energizes and the OFF time begins. At the end of the OFF time, the output energizes and the cycle repeats as long as input voltage is applied.

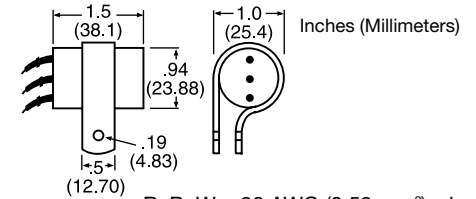
Reset: Removing input voltage resets the output and the flash sequence.

Function



T1 = ON Time T2 = OFF Time T1 ≅ T2
ON time plus OFF time equals one complete flash.

Mechanical View



R, B, W = 20 AWG (0.52 mm²) wires
6 in. (15.2 cm)
Mounting bracket is removable

Available Models-

- FS491 FS491-45

Don't see what you need? Call us for a minimum quantity and price quote!

Ordering Table

Input	Output Rating	Part Number
120 V AC ... 240 V AC	0.5 A	FS491
24 V AC	1 A	FS421

Technical Data

Operation

Mode of Operation
Flash Rate
ON/OFF Ratio
Custom Flash Rates Available

ON/OFF solid state flasher for continuous duty
Factory fixed at 75 flashes per minute +/-20%
≅ 50%
From 45 ... 150 FPM +/-20%

Input

Voltage
Tolerance
Frequency

24, or 120 ... 240 V AC
+/- 15%
50 ...60 Hz

Output

Load Type
Output
Maximum Load Rating 120 V AC...240 V AC
24 V AC
Max. Load Leakage Current
Voltage Drop

LED or resistive
Bridge Rectifier and FET
0.5 A steady state; 5 A Inrush
1A steady state; 10 A Inrush
250 μA
2 V Typical

Mechanical

Mounting
Package

Surface mount with one #8 (M4 x 0.7) screw
1.5 x 0.94 in. (38.1 x 23.9 mm)

Protection

Surge
Circuitry

IEEE C62.41 - 1991 Level A
Encapsulated

Environmental

Operating / Storage Temperature
Humidity
Weight

-20°C ... +60°C / -40°C ... +85°C
95% relative, non-condensing
≅ 1.1 oz (31 g)

FS401B01 09:10